



PROTECTING THE MESSAGE



The MailFoundry Email Security Appliance is the most cost effective method to eliminate spam and viruses from your network. Utilizing the MessageIQ anti-spam engine, MailFoundry is able to effectively eliminate up to 99% of spam while keeping false positives to less than 1 in 1,000,000.

MailFoundry is not only effective at stopping spam without creating false positives, but it is also amazingly easy to setup and maintain and it has the lowest total cost of ownership, even compared to open source based systems.

MailFoundry protects both incoming and outgoing emails. After all, why just protect half of the network traffic?

Nothing Works

The secret to the effectiveness of MailFoundry is it's "Message IQ" engine. This engine is powered by spam profiles that are created by human editors 24x7x365 and delivered automatically to the MailFoundry appliance every 5 minutes. The result is amazing - up to 99% effective against spam while all but eliminating troublesome false positives that are common in other systems.

In addition to the standard filtering technology, MailFoundry is capable of an amazing array of custom filters and management options to your exact needs and requirements.

Installing MailFoundry is as easy as 1, 2, 3. Simply install it, power it up, and connect it to your network. It will immediately decrease the amount of spam entering your network. There is no training period, no tweaking of the rules, and no daily monitoring of the quarantine for false positives.

MailFoundry costs less than many Spam Assassin based products and is much more accurate. It allows your administrators and employees to get back to work instead of focusing on spam.



General

- Protects any SMTP mail server including Microsoft Exchange, Lotus Notes, etc
- Mail routing for unlimited SMTP servers
- Mail filtering for unlimited domains
- Safe to deploy outside of your firewall
- Easy setup and deployment
- Detailed e-mail statistics reporting by system/domain/address
- Automatic mail spooling
- Spam profile updates every five minutes
- Virus updates as needed
- Optional outbound mail filtering/scanning
- Automatic system software updates (with manual option)
- Automated off-site backups of configuration and statistics (with manual option)
- Auto detection of valid users and domains
- System notification email alerts
- Multiple admin access (access by domain or system)
- Mail queue management
- 1 Year Warranty
- M-F Telephone Support

SPAM Filtering

- Real-time spam attack detection engine
- Outbound spam scanning
- Unlimited local filters per address/domain/system-wide
- Keyword filtering
- Attachment type filtering
- Sender Domain DNS Verification
- Selective whitelist support for legitimate addresses
- Filter by domain or IP address
- Customizable RBL (real-time blacklist) for increased spam filtering
- Spam action options (trash, tag, quarantine, etc.)
- Protected/unprotected address lists
- RFC mail compliant filter
- Quarantine Digest (per address, customizable periodic)

ANTI-VIRUS Filtering

- Real-time AntiVirus engine
- 24/7/365 virus scanning
- Outbound spam scanning
- Virus mail options (trash, tag, quarantine, etc.)
- Detailed anti-virus reporting

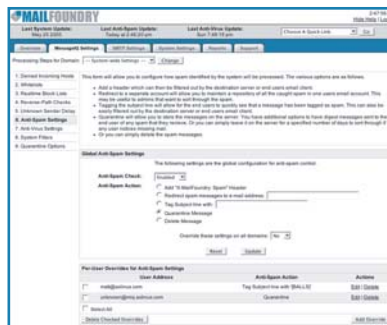
Administration Interface

- User friendly interface with intuitive options
- Simple setup and hands off administration options
- Quick access to message queue and spooling
- Access mail, spam and anti-virus options
- Reporting Capabilities
- Message stats by address, domain, system
- Custom billing/utilization reports
- Domain level user management

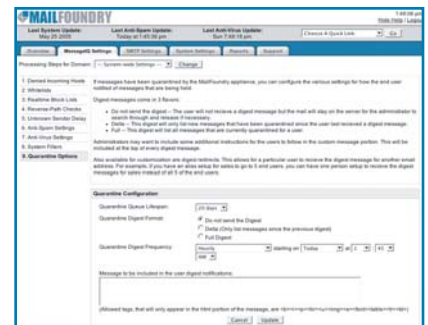
Overview







Anti-spam Settings



Quarantine Options



| |  2100 |  4100 |  6100 |  8100 |
|---|---|---|---|---|
| Features | | | | |
| Price/Yearly Subscription | | | | |
| Recommended users | 2,500 | 10,000 | 20,000 | 30,000 |
| Active Domains | Unlimited | Unlimited | Unlimited | Unlimited |
| Active SMTP servers | ✓ | ✓ | ✓ | ✓ |
| Outbound Email scanning | ✓ | ✓ | ✓ | ✓ |
| Compatible with all Email Servers | ✓ | ✓ | ✓ | ✓ |
| Hardened and Secure OS | ✓ | ✓ | ✓ | ✓ |
| MS Exchange Connector | ✓ | ✓ | ✓ | ✓ |
| Per user quarantine | ✓ | ✓ | ✓ | ✓ |
| Syslog support | ✓ | ✓ | ✓ | ✓ |
| Per Domain Settings | ✓ | ✓ | ✓ | ✓ |
| User/Domain/System statistics | ✓ | ✓ | ✓ | ✓ |
| Automatic mail spooling | ✓ | ✓ | ✓ | ✓ |
| Automatic system software updates | ✓ | ✓ | ✓ | ✓ |
| Automated off-site backups | ✓ | ✓ | ✓ | ✓ |
| Auto-detection of users/domains | ✓ | ✓ | ✓ | ✓ |
| Mail queue management | ✓ | ✓ | ✓ | ✓ |
| Customize maximum allowed message size | ✓ | ✓ | ✓ | ✓ |
| Custom message footer attachment | ✓ | ✓ | ✓ | ✓ |
| Access to message queue and spooling | ✓ | ✓ | ✓ | ✓ |
| Detailed reporting tools (system wide) | ✓ | ✓ | ✓ | ✓ |
| Message stats by user/domain/system | ✓ | ✓ | ✓ | ✓ |
| Custom billing/utilization report tools | ✓ | ✓ | ✓ | ✓ |
| Domain level user admin access | ✓ | ✓ | ✓ | ✓ |
| Multiple Admin access by domain/system | ✓ | ✓ | ✓ | ✓ |

| |  2100 |  4100 |  6100 |  8100 |
|----------------------------|---|---|---|---|
| Hardware Matrix | | | | |
| Flash boot | ✓ | ✓ | ✓ | ✓ |
| RAID Hard drives | 0 | 2 | 4 | 8 |
| High speed optimized OS | ✓ | ✓ | ✓ | ✓ |
| High speed email processor | ✓ | ✓ | ✓ | ✓ |
| Redundant power supplies | | | | ✓ |